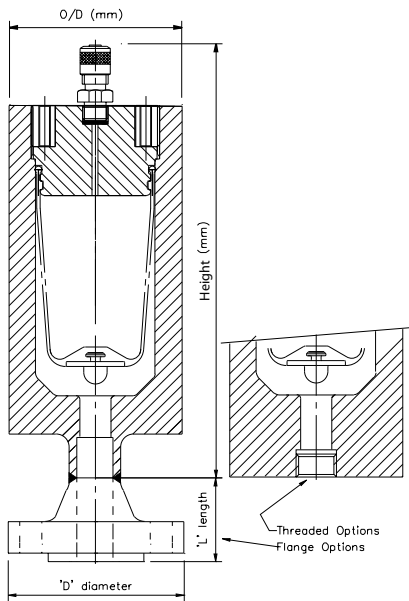


# Stainless Steel Pulsation Dampers



## Specification

### Design Features include

CE certified in accordance with the PED (97/23/EC) where applicable. Manufactured from high grade Stainless Steel, other materials available.

- Nominal capacities 0.1 litre to 5 litres.
- Working pressures of up to 690 bar
- Wide range of separator materials available
- Designed to PD5500, ASME VIII Div 1 available as an option.
- Material certifications are available to EN10204 3.1 b
- Third party witness is available on request.
- NACE MR0175 compliance is available on request.

### APD Range

	Volume (litres)						
	0.1	0.25	0.5	1	2	3	5
Height (mm)	190	212	242	262	397	425	437
O/D (mm)	60	76	90	127	127	153	170
Weight (kg)	2.7	4.5	6	15	20	31	33
M.W.P. (bar)	350	300	250	180	180	250	120

### BPD Range

	Volume (litres)						
	0.1	0.25	0.5	1	2	3	5
Height (mm)	202	236	272	290	426	448	472
O/D (mm)	76	102	127	146	146	170	190
Weight (kg)	5.4	12	21	27	37	52	55
M.W.P. (bar)	690	690	690	450	450	430	300

## Optional Flange Available

	Dimensions (mm)	Nominal Flange Sizes					
		½"	¾"	1"	1 ¼"	1 ½"	2
150lb	Diameter "D"	88.9	98.4	107.9	117.5	127	152.4
	Length "L"	47.6	52.4	55.6	57.1	61.9	63.5
	Weight (kg)	0.5	0.7	1.1	1.5	1.8	2.7
300lb	Diameter "D"	95.2	117.5	123.8	133.4	155.6	165.1
	Length "L"	52.4	57.1	61.9	65.1	68.3	69.8
	Weight (kg)	0.8	1.3	1.7	2.2	3.2	3.6
600lb	Diameter "D"	95.2	117.5	123.8	133.4	155.6	165.1
	Length "L"	52.4	57.1	61.9	66.7	69.8	73
	Weight (kg)	0.9	1.5	1.9	2.6	3.3	4.7
900lb	Diameter "D"	120.6	130.2	149.2	158.7	177.8	215.9
	Length "L"	60.3	69.8	73	73	82.5	101.6
	Weight (kg)	1.9	2.6	3.8	4.4	6.1	11.1
1500lb	Diameter "D"	120.6	130.2	149.2	158.7	177.8	215.9
	Length "L"	60.3	69.8	73	73	82.5	101.6
	Weight (kg)	1.9	2.6	3.8	4.4	6.1	11.1
2500lb	Diameter "D"	133.3	139.7	158.8	184.2	203.2	235
	Length "L"	73	79	89	95	111	127
	Weight (kg)	3.6	4.1	5.9	9	13	19

The information in this datasheet is subject to change without prior notice.

# Stainless Steel Pulsation Dampers

Model numbers

APD - 001 - 0 - 001

## Damper Type

APD = Standard Pressure  
 BPD = High Pressure  
 CPD = ASME Standard Pressure  
 DPD = ASME High Pressure  
 EPD = 'Special' Alternative Materials

## Nominal Volume - Litres

001 = 0.1	200 = 2
025 = 0.25	300 = 3
050 = 0.5	500 = 5
100 = 1	

## Bladder Material

0 = NITRILE  
 A = EPDM  
 6 = VITON

Other bladder materials available on request.

## Fluid End Connection

0001 = 1/2" BSP (F)  
 0002 = 3/4" BSP (F)  
 0003 = 1" BSP (F)  
 0004 = 1 1/2" BSP (F)  
 0005 = 1/2" NPT (F)  
 0006 = 2" BSP (F)  
 0007 = 3/4" NPT (F)

0010 = 1/2" 150 lb R/F Flange  
 0011 = 1" 150 lb R/F Flange  
 0012 = 1/2" 300 lb R/F Flange  
 0013 = 1" 300 lb R/F Flange  
 0016 = 2" 150 lb R/F Flange  
 0032 = 2" 300 lb R/F Flange

Other thread and flange options available on request.



The information in this datasheet is subject to change without prior notice.