

Oil & Gas Bladder Accumulators

207, 310, 345, 420 & 480 bar



Specification

Shell

Oil Service - seamless shell, designed and manufactured to PED 97/23/EEC and CE marked. Material - Chromium-molybdenum steel. Working pressure 207, 310, 345, 420 and 480 bar. Water service as above with shell interior epoxy resin lined.

Label

With assembly specification and installation details

Witness hydro-pneumatic pressure tests

These can be carried out on complete accumulators and can be undertaken for a specific inspection authority and/or customer requirement as an optional extra.

Material Certification

Available on request for all major pressure loaded parts to EN 10204 3.1

Finish

One coat primer paint as standard. Special paints available.

Bladder

Totally enclosed construction with an extensive range of elastomers available. See Bladder information for further details.

Fluid Port Assembly

Integral high-flow port and poppet valve assembly with an anti-extrusion ring. For options see overleaf.

Safety

All gas-loaded accumulators are pressurised vessels and it is recommended that safety consideration be given to the application in which they are used. A relief valve should always be fitted to the hydraulic system with the option of a burst disc to protect the accumulator. If there is a fire risk in the vicinity of the accumulator, then a fusible/eutectic plug should be fitted. See Installation and Servicing data sheet for information regarding installation of accumulators.

Accessories

A complete range of accumulator accessories are available from Fawcett Christie Hydraulics.

Spare Parts

Available on request.

Model Numbers for Oil & Gas Bladder Accumulators

54 0 SA CZ 20 1 Ex

Nominal Volume - Litres

Bladder Material

0 = Nitrile Standard
2 = Low Temperature Nitrile
3 = Low permeability Nitrile (23E-10cm³/s/cm/Hg)
6 = Viton
K = Special low temperature Nitrile

Bladder Stem/ Gas Valve

SA = 1/4" BSP Gas Valve, Stainless Steel Trim 3F = 1/4"
BSP St. Steel Gas Valve, Stainless Steel Trim
3L = As 'SA' but fitted with additional seals

Shell and Fluid Port Options (J)

CZ = Unlined Shell, St.Steel Externals, 1/2" NPTF Port
DL = Unlined Shell, St.Steel Externals, 1/2" BSPF Port
DR = Unlined Shell, St.Steel Externals, 1/2" NPTF Double Seal Locking Ring
DU = Unlined Shell, St.Steel Externals, 1" NPTF Port
DW = Unlined Shell, St.Steel Externals, 3/4" NPTF Port
EZ = Unlined Shell, St.Steel Externals, 3/4" BSPF Port
W6 = Unlined Shell, St.Steel Externals, 2" BSPF Port

Maximum Working Pressure

20 = 207 bar 31 = 310 bar
34 = 345 bar 35 = 350 bar
42 = 420 bar 48 = 480 bar
Higher pressure units available on request

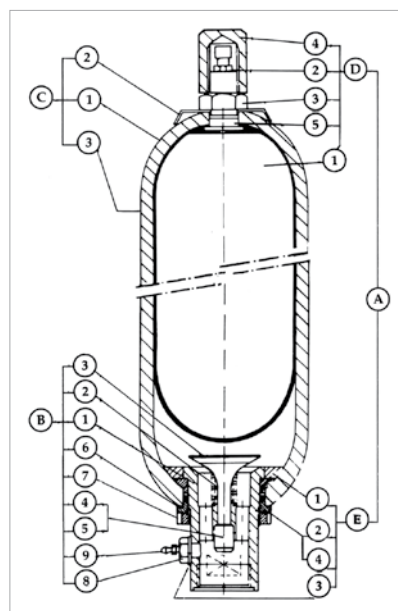
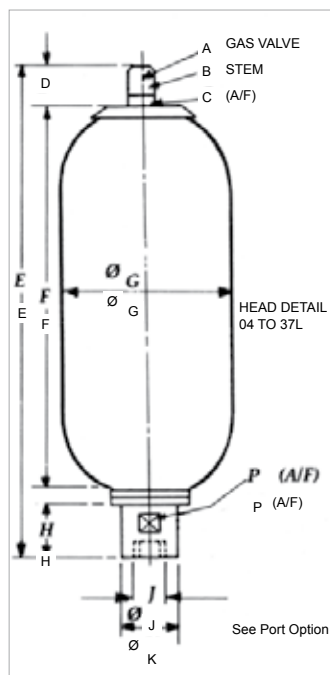
Design Standard/ Authority Approval

1 = Lloyds/CE

Special Approvals

Ex = ATEX Approval to 94/9/Ec

ATEX - Accumulator conforms to ATEX DIRECTIVE 94/9/EC (non electrical equipment) Equipment Group II, category 2, atmosphere tve GD. The equipment can be used in zone 1 & zone 2 above ground.



Note: Models 1/54 litres detailed above. Models 0.6 litres and below have Gas Valve assembly integral with bladder stem without protective cap fitted.

A	Bladder Kit comprising:
D	Bladder assembly
D1	Bladder
D2	Gas valve assembly
D3	Locknut
D4	Protective cap
D5	'O' ring stem
E	Anti extrusion ring assembly
E1	Anti extrusion ring
E2	'O' ring fluid port
E3	Bonded seal
E4	Back-up ring
B	Fluid port assembly comprising
B1	Fluid port body
B2	Spring
B3	Poppet valve
B4	Collet
B5	Piston
B6	Flanged washer
B7	Locking ring
B8	Bleed adaptor
B9	Bleed valve
C	Shell assembly comprising:
C1	Shell
C2	Label
C3	Label warning

Nominal Capacity Litres	Effective Gas vol. Litres	Work press. bar	Max Flow Rate lt/min	Weight Dry Kilo	Dimensions in mm unless stated otherwise and subject to manufacturer's tolerances									
					A Inches	B Inches	C	D	E	F	G	H	K	P
10	9.4	207	749	27.00	1/4 BSP	3/8 UNF	28	78	575	407	221	50	76	69
10	9.4	310	749	27.00	1/4 BSP	3/8 UNF	28	78	575	407	221	50	76	69
10	9.4	345	749	30.00	1/4 BSP	3/8 UNF	28	78	575	407	221	50	76	69
10	9.4	390/420	749	40.00	1/4 BSP	3/8 UNF	28	78	575	407	228	50	76	69
20	18.8	207	749	42.00	1/4 BSP	3/8 UNF	28	78	886	718	221	50	76	69
20	18.8	310	749	42.00	1/4 BSP	3/8 UNF	28	78	886	718	221	50	76	69
20	18.8	345	749	46.00	1/4 BSP	3/8 UNF	28	78	886	718	221	50	76	69
20	18.8	390/420	749	54.00	1/4 BSP	3/8 UNF	28	78	886	718	228	50	76	69
28	25.8	207	749	55.00	1/4 BSP	3/8 UNF	28	78	1158	990	221	50	76	69
28	25.8	310	749	55.00	1/4 BSP	3/8 UNF	28	78	1158	990	221	50	76	69
28	25.8	345	749	61.00	1/4 BSP	3/8 UNF	28	78	1158	990	221	50	76	69
28	25.8	390/420	749	70.00	1/4 BSP	3/8 UNF	28	78	1158	990	228	50	76	69
37	35.2	207	749	66.00	1/4 BSP	3/8 UNF	28	78	1407	1239	221	50	76	69
37	35.2	310	749	66.00	1/4 BSP	3/8 UNF	28	78	1407	1239	221	50	76	69
37	35.2	345	749	74.00	1/4 BSP	3/8 UNF	28	78	1407	1239	221	50	76	69
37	35.2	390/420	749	86.00	1/4 BSP	3/8 UNF	28	78	1407	1239	228	50	76	69
54	49.2	207	749	92.00	1/4 BSP	M50x 1.5	69	66	1922	1766	221	50	76	69
54	49.2	310	749	92.00	1/4 BSP	M50x 1.5	69	66	1922	1766	221	50	76	69
54	49.2	345	749	102.00	1/4 BSP	M50x 1.5	69	66	1922	1766	221	50	76	69
54	49.2	390/420/480	749	119.00	1/4 BSP	M50x 1.5	69	66	1922	1766	228	50	76	69