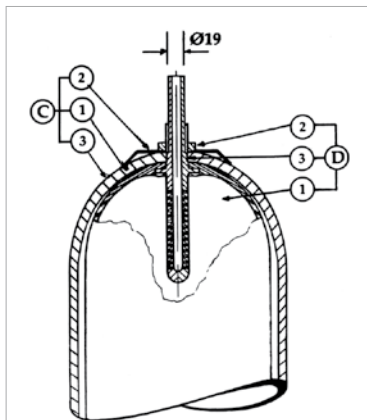


# Transfer Barrier Accumulator

207, 310, 345 & 420 bar



Type 1A  
10-37 litre models

Key	Item
<b>C</b>	<b>Shell assembly comprising</b>
C1	Shell
C2	Label
C3	Warning label
<b>D</b>	<b>Bladder assembly comprising</b>
D1	Bladder
D2	Stem tube
D3	'O' ring system

## Specification

### Shell

Oil Service - seamless shell, designed and manufactured to European specifications CE marked. Material - Chromium-molybdenum steel. Working pressure 207, 310, 345 and 420 bar. Water service as above with shell interior epoxy resin lined.

### Label

With assembly specification and installation details

### Witness hydro-pneumatic pressure tests

These can be carried out on complete accumulators and can be undertaken for a specific inspection authority and/or customer requirement as an optional extra.

### Material Certification

Available on request for all major pressure loaded parts to EN 10204 3.1

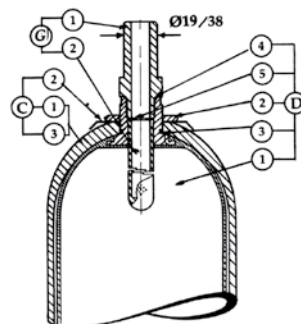
### Finish

One coat primer paint as standard. Special paints available.

### Bladder

Totally enclosed construction with an extensive range of elastomers available. See Bladder information for further details.

Key	Item
<b>C</b>	<b>Shell assembly comprising</b>
C1	Shell
C2	Label
C3	Warning label
<b>D</b>	<b>Bladder assembly comprising</b>
D1	Bladder
D2	Stem tube
D3	'O' ring system
D4	'O' ring seal
D5	Flat seal
<b>G</b>	<b>End fitting assembly</b>
G1	T.B. adaptor
G2	Stem tube



Type 1A 19mm  
Type 7A 38mm  
54 litre models only

### Fluid Port Assembly

Integral high-flow port and poppet valve assembly with an anti-extrusion ring. For options see overleaf.

### Safety

All gas-loaded accumulators are pressurised vessels and it is recommended that safety consideration be given to the application in which they are used. A relief valve should always be fitted to the hydraulic system with the option of a burst disc to protect the accumulator. If there is a fire risk in the vicinity of the accumulator, then a fusible/eutectic plug should be fitted. See Installation and Servicing data sheet for information regarding installation of accumulators.

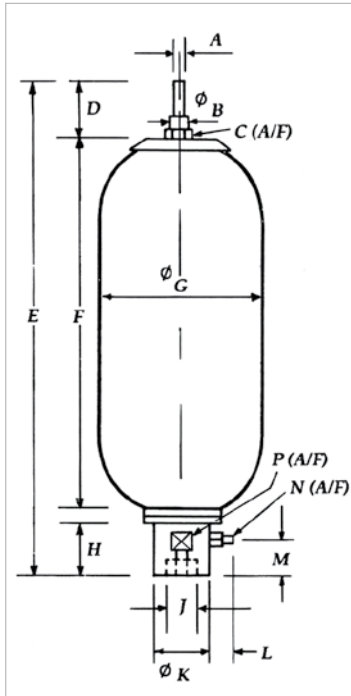
### Accessories

A complete range of accumulator accessories are available from Fawcett Christie Hydraulics.

### Spare Parts

Available on request.

### Model Numbers for Transfer Barrier Accumulators



54 0 1A 00 20 1

#### Nominal Volume - Litres

#### Bladder Material

- 0 = Nitrile Standard
- 1 = Butyl
- 2 = Low Temperature Nitrile
- 3 = Low permeability

Other materials available

#### Bladder kit

Quote full part No. typically 5401A-00 which will include the bladder assembly with stem, 'O' seal, lock nut, flat seal and adaptor, 'O' seal anti-extrusion ring, fluid port, 'O' seal and back up ring and bleed plug bonded seal.

#### Bladder Stem/ Gas Valve

- 10 - 37L
- 1A = 7/8" UNF/19mm
- 7G = 7/8" UNF M St. Steel
- DA = 7/8" UNF/19mm St. Steel

#### 54L

- 1A = M50 x 1.5 /19mm
- 7A = M50 x 1.5 /38mm
- DA = M50 x 1.5 /19mm St. Steel
- 2H = M50 x 1.5 /38mm St. Steel
- 5L = M50 x 1.5 /1" BSP Fem
- 7G = 7/8" UNF St. Steel

#### Shell and Fluid Port Options

- 00 = Oil Service
- 02 = Low/medium corrosive service
- 04 = NPT fluid port Low/medium corrosive service
- 13 = NPT fluid port - oil service

For other assembly options please contact Head Office

#### Maximum Working Pressure

- 20 = 207 bar
- 31 = 310 bar
- 34 = 345 bar
- 35 = 350 bar
- 42 = 420 bar

#### Design Standard/ Authority Approval

1 = Lloyds/CE

Nominal Capacity Litres	Effective Gas vol. Litres	Work press. bar	Max Flow Rate lt/min	Weight Dry Kilo	Dimensions													
					B Inches	C	D	E	F	G	H	J Inches	K	L	M	N	P	
10	9.4	207	749	27.00	7/8 UNF	34	76	575	407	221	70	2 BSPF	76	36	46	9	69	
10	9.4	310	749	30.00	7/8 UNF	34	76	575	407	221	70	2 BSPF	76	36	46	9	69	
10	9.4	345	749	30.00	7/8 UNF	34	76	575	407	228	70	2 BSPF	76	36	46	9	69	
10	9.4	420	749	34.00	7/8 UNF	34	76	575	407	228	70	2 BSPF	76	36	46	9	69	
20	18.8	207	749	46.00	7/8 UNF	34	76	886	718	221	70	2 BSPF	76	36	46	9	69	
20	18.8	310	749	46.00	7/8 UNF	34	76	886	718	221	70	2 BSPF	76	36	46	9	69	
20	18.8	345	749	46.00	7/8 UNF	34	76	886	718	228	70	2 BSPF	76	36	46	9	69	
20	18.8	420	749	54.00	7/8 UNF	34	76	886	718	228	70	2 BSPF	76	36	46	9	69	
28	25.8	207	749	61.00	7/8 UNF	34	76	1158	990	221	70	2 BSPF	76	36	46	9	69	
28	25.8	345	749	61.00	7/8 UNF	34	76	1158	990	228	70	2 BSPF	76	36	46	9	69	
37	35.2	207	749	74.00	7/8 UNF	34	76	1407	1239	228	70	2 BSPF	76	36	46	9	69	
37	35.2	310	749	74.00	7/8 UNF	34	76	1407	1239	221	70	2 BSPF	76	36	46	9	69	
37	35.2	345	749	74.00	7/8 UNF	34	76	1407	1239	221	70	2 BSPF	76	36	46	9	69	
37	35.2	420	749	86.00	7/8 UNF	34	76	1407	1239	228	70	2 BSPF	76	36	46	9	69	
54	49.2	207	749	102.00	M50x 1.5	70	94	1922	1766	228	70	2 BSPF	76	36	46	9	69	
54	49.2	310	749	102.00	M50x 1.5	70	94	1922	1766	221	70	2 BSPF	76	36	46	9	69	
54	49.2	345	749	102.00	M50x 1.5	70	94	1922	1766	228	70	2 BSPF	76	36	46	9	69	
54	49.2	420	749	119.00	M50x 1.5	70	94	1922	1766	228	70	2 BSPF	76	36	46	9	69	