

Piston Accumulators

Specification



Capabilities

FCH Piston Accumulators are available in any capacity up to 1350 litres. Capacity is only limited by pressure and available materials. Our standard range is 1 litre up-to and including 150 litres. All units are made to order, and can be custom engineered to suit specific space restrictions.

Pressure

Piston Accumulators are available in any pressure between 5 bar and 2500 bars. The pressure rating is dependant on capacity and/or available materials.

Materials

Our units are available in a variety of materials such as Carbon steel, Stainless steel, Duplex or Super Duplex steels and Aluminium. All come with a choice of material certification options.

Design

Vessels will be in accordance with the PED 97/23/EC for use in Europe and designed to PD5500. Optional 3rd party witness (eg. Lloyds) available. Other design codes can be considered for example ASME VIII Div 1.

Fluid End Connections

To suit customer requirements – e.g. NPT, BSP, Autoclave type or SAE/ASME flanged.

Gas End Connections

To suit customer requirements – e.g. NPT, BSP, Autoclave type or SAE/ASME flanged. Transfer barrier ports, Gas Charging valves (brass and stainless) Gas pressure relief devices e.g. Burst discs and Fuse plugs.

Seals

For low or high temperature applications. Materials typically Nitrile, PTFE, Viton, EPDM and others.

Piston Position Indicators

Carbon Steel Options:

- Tailrod – magnetic operation with visual flapper or magnetic indicator switch.
- Bent tube Indicator - magnetic operation with visual flapper or magnetic indicator switch.
- Tailrod – operating a cam/switch.
- Proximity switch

Stainless Steel Options:

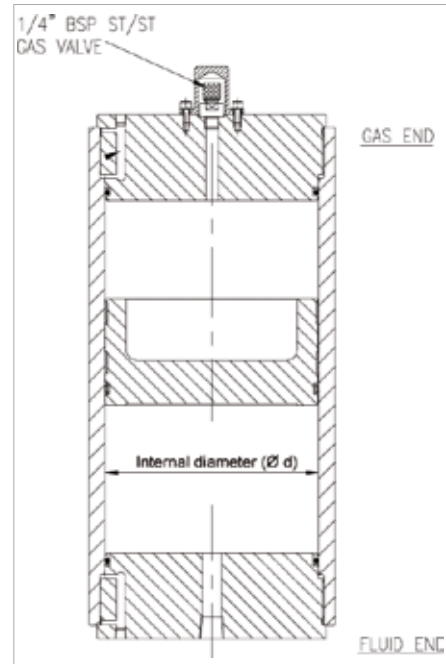
- Piston Magnet - magnetic operation with visual flapper or magnetic indicator switch
- Proximity switches

Carbon Steel Units

| Design Pressure (PS) | Internal Diameter (Ø d) | | | | | | | | | | | | |
|----------------------|-------------------------|----|-----|-----|-----|-----|-----|-----|-----|-----|-----|-----|--|
| | 50 | 80 | 100 | 125 | 160 | 200 | 250 | 280 | 320 | 400 | 501 | 600 | |
| 150 | | | | | | | | | | | | | |
| 170 | | | | | | | | | | | | | |
| 200 | | | | | | | | | | | | | |
| 220 | | | | | | | | | | | | | |
| 240 | | | | | | | | | | | | | |
| 250 | | | | | | | | | | | | | |
| 270 | | | | | | | | | | | | | |
| 275 | | | | | | | | | | | | | |
| 280 | | | | | | | | | | | | | |
| 300 | | | | | | | | | | | | | |
| 350 | | | | | | | | | | | | | |
| 370 | | | | | | | | | | | | | |
| 390 | | | | | | | | | | | | | |
| 450 | | | | | | | | | | | | | |
| 455 | | | | | | | | | | | | | |
| 490 | | | | | | | | | | | | | |
| 530 | | | | | | | | | | | | | |
| 760 | | | | | | | | | | | | | |
| 863 | | | | | | | | | | | | | |
| 950 | | | | | | | | | | | | | |
| 1035 | | | | | | | | | | | | | |
| 1050 | | | | | | | | | | | | | |
| 1380 | | | | | | | | | | | | | |
| 1500 | | | | | | | | | | | | | |
| 2100 | | | | | | | | | | | | | |

Due to our wide range of product sizes we are unable to display every option available therefore the adjacent table displays a selection of our most commonly requested sizes.

For further information please contact a member of our sales team.



Stainless Steel (17/4 PH)

| Design Pressure (PS) | Internal Diameter (Ø d) | | | | | | | | | | | | |
|----------------------|-------------------------|----|-----|-----|-----|-----|-----|-----|-----|-----|-----|-----|--|
| | 50 | 80 | 100 | 125 | 160 | 200 | 250 | 280 | 320 | 400 | 501 | 600 | |
| 455 | | | | | | | | | | | | | |
| 600 | | | | | | | | | | | | | |
| 690 | | | | | | | | | | | | | |
| 760 | | | | | | | | | | | | | |
| 863 | | | | | | | | | | | | | |
| 960 | | | | | | | | | | | | | |
| 1050 | | | | | | | | | | | | | |
| 1380 | | | | | | | | | | | | | |
| 1500 | | | | | | | | | | | | | |
| 2100 | | | | | | | | | | | | | |

Stainless Steel (AISI 316)

| Design Pressure (PS) | Internal Diameter (Ø d) | | | | | | | | | | | | |
|----------------------|-------------------------|----|-----|-----|-----|-----|-----|-----|-----|-----|-----|-----|--|
| | 50 | 80 | 100 | 125 | 160 | 200 | 250 | 280 | 320 | 400 | 501 | 600 | |
| 150 | | | | | | | | | | | | | |
| 220 | | | | | | | | | | | | | |
| 230 | | | | | | | | | | | | | |
| 250 | | | | | | | | | | | | | |
| 320 | | | | | | | | | | | | | |
| 350 | | | | | | | | | | | | | |
| 425 | | | | | | | | | | | | | |
| 455 | | | | | | | | | | | | | |
| 550 | | | | | | | | | | | | | |
| 630 | | | | | | | | | | | | | |
| 750 | | | | | | | | | | | | | |
| 760 | | | | | | | | | | | | | |